

Gas Doner Kebab Machines Top Motor



Doner Kebab Machines / Gas / Top Motor



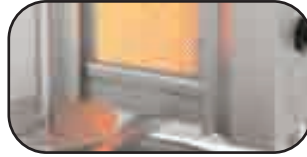
ADG - 3 U



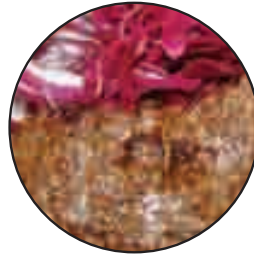
ADG - 4 U



ADG - 5 U



- LPG and NG options available.
- Safety valve automatically cuts off the gas from the radiant heaters that go out unexpectedly.
- Electric motor installed at the top rotates in both directions.
- Side flaps are available as an option.
- In case of failure of the electric motor, the machine can be controlled manually.
- Flame curtain moving along with the motor extends the life of the motor.
- Stainless steel meat tray.
- Movable skewer holder maintain forward and backward moving.
- Holed tray helps easy fat dripping.



Model	ADG - 3 U	ADG - 4 U	ADG - 5 U
Radian Heaters	3	4	5
Voltage	230 V	230 V	230 V
Gas Consumption-LPG	0.638 kg/h	0.851 kg/h	1.063 kg/h
Gas Consumption-NG	1.107 m ³ /h	1.476 m ³ /h	1.845 m ³ /h
kW -LPG	8.1	10.8	13.5
kW - NG	10.2	13.6	17
Kcal-LPG	6964	9286	11607
Kcal - NG	8770	11693	14617
Dimensions	490 x 660 x 973	490 x 660 x 1140	490 x 660 x 1307
Packaged Dimens.	640 x 770 x 1140	640 x 770 x 1290	640 x 770 x 1410
Weight	36 kg	41 kg	46 kg
Packaged Weight	39 kg	44 kg	51 kg

U: Top Motor